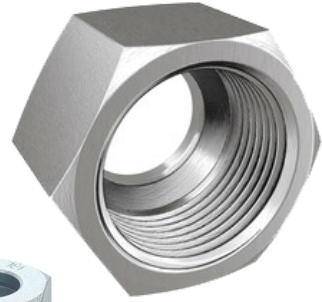


# Hydraulic Industries



**info@cosmohydraulic.com**

# COMPANY PROFILE



**Cosmo Hydraulic Industries** is one of the leading manufacturers in producing fluid connectors under quality control system. Our main products are Hydraulic Tube Fittings, Instrumentation Fittings, Ermeto Fittings Hydraulic Hose Adapter, Hydraulic Hose Fittings, Ferrule, Reusable Hose Fittings, Hydraulic Ball Valves, Niddle Valves, Check Valves and Hydraulic Tube Clamps etc.

Cosmo Hydraulic Industries serves in fields of Industrial machinery, construction machinery, Automobile manufacturing, Industrial pipes, Marine, Energy, Defense, Railway, Steel Plants Etc. We provide products according to international standards. In addition customization and OEM are also available here.

Our mission is to provide the best quality products and the most professional services to our customers. The performance of our products is guaranteed during the whole manufacturing cycle from our employment of customized materials which should be controlled more strictly than just according to ASTM requirements to our implementation of production and testing exceeding the industry standards.

## **According to DIN 2353-ISO 8434-1 standard**

Cold Formed Nuts - SAE 1015 as per DIN 1.1141 & SAE 1018

Ferrule rings - EN 1A(SAE 1213/ DIN 1.0715)

Free cutting steel according to DIN EN1 0277

Hot forged Elbows & Tees - 15 C8/ SAE 1018

Bar Stock (Hex) and Flats - EN1A(SAE 1213/ DIN 1.0715)

Free cutting steel according to Din EN 10277 & St. 37 as per DIN 1 . 0254 (Steel with minimum tensile strength of 370 Mpa)



**ISO 9001:2015**

We are well equipped with best manufacturing facilities which include CNC machines, conventional machines, precision single spindle Automats, Thread rolling, milling and number of second operation machines.

# PRODUCTS



PICTORIAL VIEW	PRODUCT CODE	DESCRIPTION	BSP AND NPT THREAD SIZE	TUBE OD
	PMSC	Parallel Male Stud Coupling	1/8" To 2-1/2"	6MM To 48MM
	SUC	Straight Union Coupling		6MM To 48MM
	EEC	Equal Elbow Coupling		6MM To 48MM
	ETC	Equal Tee Coupling		6MM To 48MM
	ECC	Equal Cross Coupling		6MM To 48MM
	BHC	Equal Bulkhead Coupling		6MM To 48MM

# PRODUCTS



PICTORIAL VIEW	PRODUCT CODE	DESCRIPTION	BSP AND NPT THREAD SIZE	TUBE OD
	BHEC	Equal Bulkhead Elbow Coupling		6MM To 48MM
	SMSC	Swivel Male Stud Coupling		6MM To 48MM
	PMSE	Parallel Male Stud Elbow	1/8" To 2-1/2"	6MM To 48MM
	SE	Swivel Elbow Connector	1/8" To 2-1/2"	6MM To 48MM
	PMST	Parallel Male Stud Tee	1/8" To 2-1/2"	6MM To 48MM
	ST	Swivel Tee Connector	1/8" To 2-1/2"	6MM To 48MM

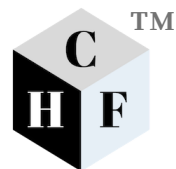


# PRODUCTS



PICTORIAL VIEW	PRODUCT CODE	DESCRIPTION	BSP AND NPT THREAD SIZE	TUBE OD
	BC	Banjo Connector	1/8" To 2-1/2"	6MM To 48MM
	BTC	Banjo Tee Coupling	1/8" To 2-1/2"	6MM To 48MM
	CN	Coupling Nut	1/4" TO 3"	6MM To 48MM
	AP	Allen Plug	1/4" TO 2"	
	HP	Hex Plug	1/4" TO 2"	
	HE	Hose Elbow	1/4" TO 2-1/2"	

# PRODUCTS



PICTORIAL VIEW	PRODUCT CODE	DESCRIPTION	BSP AND NPT THREAD SIZE	TUBE OD
	HT	Hose Tee	1/4" TO 2-1/2"	
	HA	Hose Adapter	1/4" TO 2-1/2"	
	HHA	Half Adaptor	1/4" TO 2-1/2"	
	TR	Thread Reducer	1/4" TO 2-1/2"	
	WN	Welding Nipple	1/4" TO 3"	6MM To 48MM
	BS	Bonded Seal	1/4" TO 2-1/2"	

# PRODUCTS



PICTORIAL VIEW	PRODUCT CODE	DESCRIPTION	BSP AND NPT THREAD SIZE	TUBE OD
	HPC	Hydraulic Pipe Clamp	1/4" TO 6-1/2"	
	QRC	Quick Release Coupling	1/4" TO 2"	
	HBV	Hydraulic Ball Valve	1/4" TO 2"	
	HCV	Hydraulic Check Valve	1/4" TO 2"	
	DRV	Hydraulic Flow Control Valve	1/4" TO 2"	
	HNV	hydraulic Needle Valves	1/4" TO 2"	

# COSMO

## HYDRAULIC INDUSTRIES



## REACH US

I-149, Site C, Surajpur Industrial Area, Surajpur  
Greater Noida (G.B. Nagar) U.P. - 201306  
Ph. : 0120 - 4150624

 **+91-8750048558**  **+91-8587044434**

**[info@cosmohydraulic.com](mailto:info@cosmohydraulic.com)**

**<https://www.cosmohydraulic.com>**